

GENERAL NOTES:

- ① FALL THROUGH THE HYDRO-KINETIC® PLANT FROM INLET INVERT TO OUTLET INVERT IS FIVE INCHES. INLET INVERT IS TWELVE INCHES BELOW TANK TOP.
- ② ON DEEPER INSTALLATIONS, PRECAST RISERS MUST BE USED TO EXTEND CASTINGS TO GRADE. INSPECTION COVERS MUST BE DEVELOPED TO WITHIN TWELVE INCHES OF GRADE.
- ③ TANK REINFORCED PER ACI STD. 318.
- ④ REMOVABLE COVERS ON RISERS WEIGH IN EXCESS OF SEVENTY-FIVE POUNDS EACH TO PREVENT UNAUTHORIZED ACCESS.
- ⑤ CONTACT THE LOCAL, LICENSED HYDRO-KINETIC® DISTRIBUTOR FOR ELECTRICAL REQUIREMENTS.

PROJECT ENGINEER'S APPROVAL:
 I (WE) HEREBY CERTIFY THAT THIS DRAWING HAS BEEN CHECKED AND IS APPROVED FOR USE IN CONFORMITY WITH THE CONTRACT DOCUMENTS.

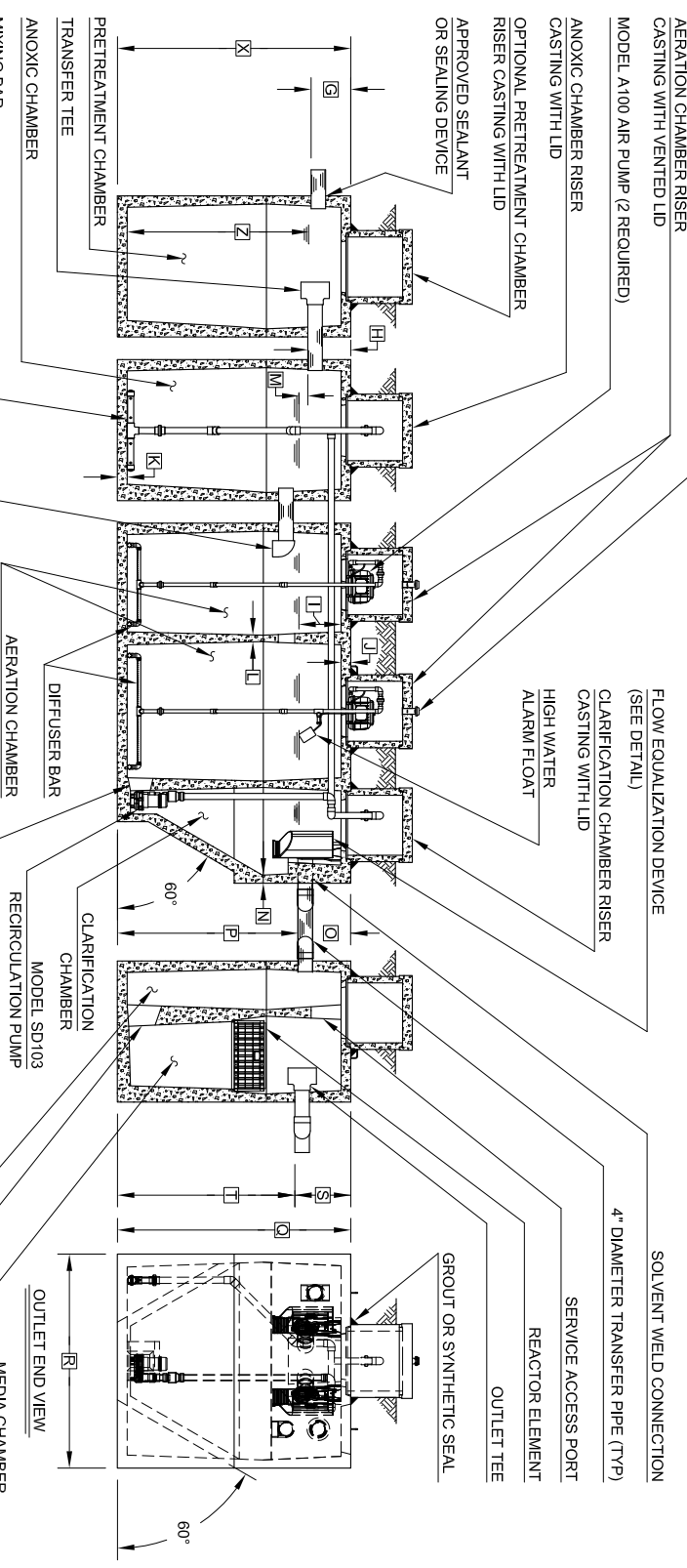
DATE: _____

NAME: _____

CONTRACTOR'S CERTIFICATION:
 I (WE) HEREBY CERTIFY THAT THIS DRAWING HAS BEEN CHECKED AND IS APPROVED FOR USE IN CONFORMITY WITH THE CONTRACT DOCUMENTS.

DATE: _____

NAME: _____



CRITICAL DIMENSIONS

A	1'-0"	N	0'-2 1/2"
B	2'-9"	O	1'-4"
C	2'-8"	P	4'-8"
D	3'-7"	Q	6'-0"
E	2'-3"	R	5'-6"
F	9'-3"	S	1'-5"
G	1'-0"	T	4'-7"
H	1'-1 1/2"	U	3'-7 1/2"
I	1'-1"	V	
J	0'-3"	W	
K	0'-3"	X	
L	0'-2"	Y	
M	0'-3"	Z	

NOTE: PRETREATMENT CHAMBER MINIMUM REQUIREMENTS SHALL BE: 650 GALLONS CAPACITY, 9.5 GALLONS PER INCH OF LIQUID LEVEL AND 9 INCHES OF FREEBOARD.

NOTE: EXTERNAL ANOXIC CHAMBER MINIMUM REQUIREMENTS SHALL BE: 650 GALLONS CAPACITY, 9.5 GALLONS PER INCH OF LIQUID LEVEL AND 12 INCHES OF FREEBOARD.

NOTE: TOTAL SYSTEM CAPACITY: 3,050 GALLONS RATED CAPACITY: 1,000 GALLONS PER DAY

U.S. AND FOREIGN PATENTS PENDING

norweco

HYDRO-KINETIC®
 MODEL 1000 FFB
 WASTEWATER TREATMENT SYSTEM

7-18-14
 JMM
 VPE
 9-18-13
 NTS
 PC-5-1028