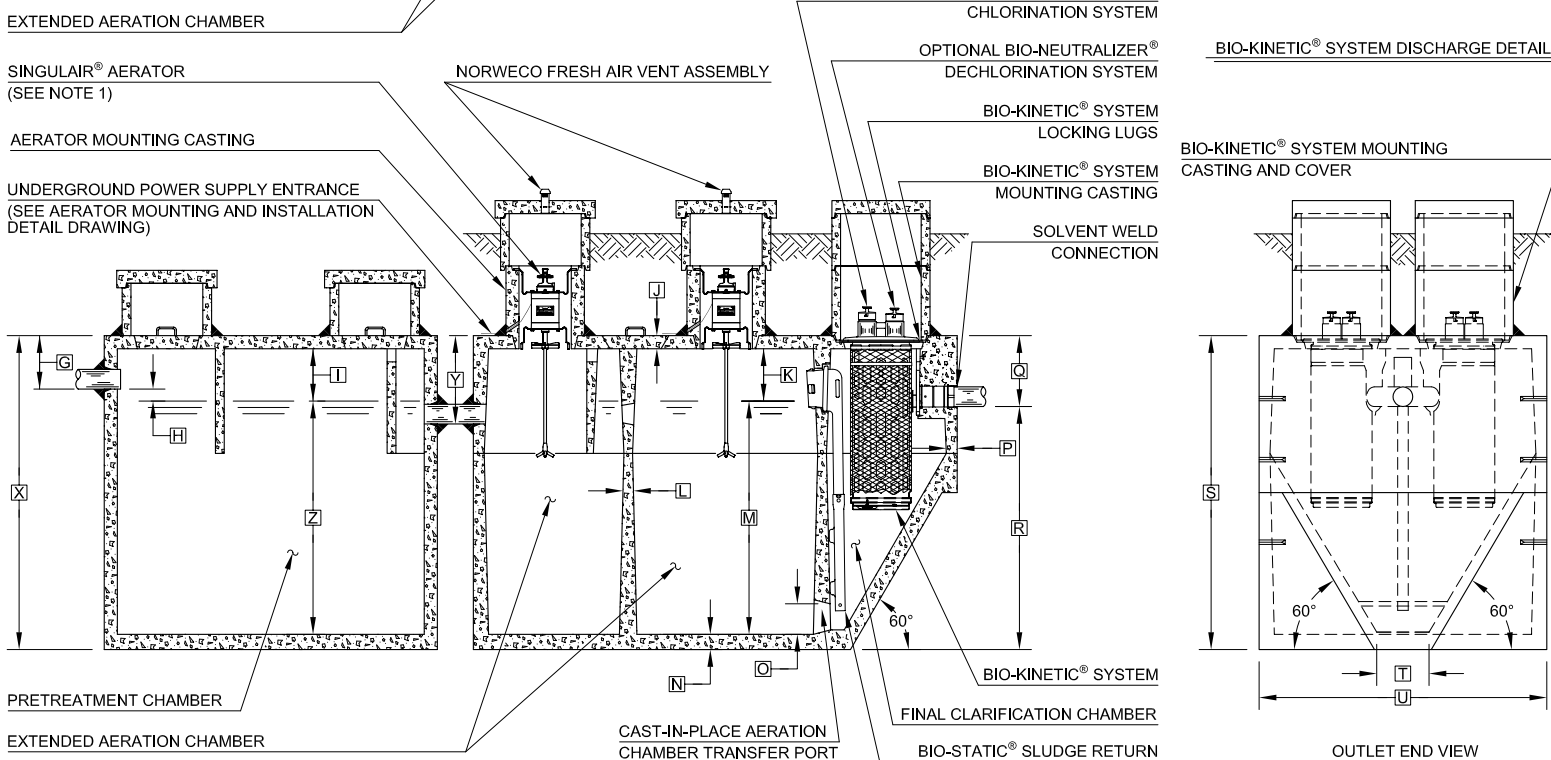
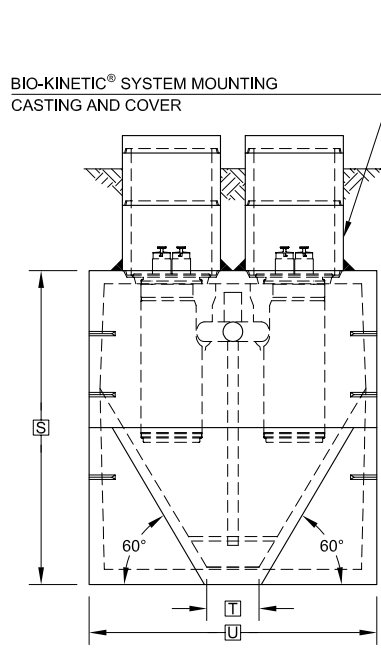


PLAN VIEW



SECTION A-A

BIO-KINETIC® SYSTEM DISCHARGE DETAIL



OUTLET END VIEW

GENERAL NOTES:

- ① SINGULAIR® AERATOR, AS TESTED AND ACCEPTED BY NSF, OPERATING 60 MINUTES ON / 60 MINUTES OFF.
- ② FALL THROUGH SINGULAIR® PLANT FROM INLET INVERT TO OUTLET INVERT IS FOUR INCHES. INLET INVERT IS TWELVE INCHES BELOW TANK TOP.
- ③ ON DEEPER INSTALLATIONS, PRECAST RISERS MUST BE USED TO EXTEND AERATOR MOUNTING CASTING AND BIO-KINETIC® SYSTEM MOUNTING CASTING TO GRADE. INSPECTION COVER ON PRETREATMENT CHAMBER MUST BE DEVELOPED TO WITHIN TWELVE INCHES OF GRADE.
- ④ TANK REINFORCED PER ACI STD. 318.
- ⑤ REMOVABLE COVERS ON RISERS WEIGH IN EXCESS OF SEVENTY-FIVE POUNDS EACH TO PREVENT UNAUTHORIZED ACCESS.
- ⑥ CONTACT THE LOCAL, LICENSED SINGULAIR® DISTRIBUTOR FOR ELECTRICAL REQUIREMENTS.

PROJECT ENGINEER'S APPROVAL:
I (WE) HEREBY CERTIFY THAT THIS DRAWING HAS BEEN CHECKED AND IS APPROVED FOR USE IN CONFORMITY WITH THE CONTRACT DOCUMENTS.

DATE: _____
NAME: _____

CONTRACTOR'S CERTIFICATION:
I (WE) HEREBY CERTIFY THAT THIS DRAWING HAS BEEN CHECKED AND IS APPROVED FOR USE IN CONFORMITY WITH THE CONTRACT DOCUMENTS.

DATE: _____
NAME: _____

CRITICAL DIMENSIONS

A	1'-0"	N	0'-3"
B	2'-9"	O	0'-6"
C	2'-8"	P	0'-2 1/2"
D	3'-7"	Q	1'-4"
E	2'-3"	R	4'-8"
F	9'-3"	S	6'-0"
G	1'-0"	T	1'-0"
H	0'-3"	U	5'-6"
I	1'-0"	V	
J	0'-3"	W	
K	1'-0"	X	
L	0'-2"	Y	1'-8"
M	4'-6"	Z	

NOTE: PRETREATMENT CHAMBER MINIMUM REQUIREMENTS SHALL BE: 1,000 GALLONS CAPACITY, 15 GALLONS PER INCH OF LIQUID LEVEL AND 12 INCHES OF FREEBOARD.

NOTE: SOME CRITICAL DIMENSIONS ARE INTENTIONALLY LEFT BLANK TO BE FILLED IN PER INDIVIDUAL JOB SITE SPECIFICATIONS.

NOTE: TOTAL SYSTEM CAPACITY: 2,300 GALLONS
RATED CAPACITY: 1,000 GALLONS PER DAY

U.S. AND FOREIGN PATENTS PENDING	norweco	REVISED: 6-25-07	REVISION: B
	SINGULAIR® BIO-KINETIC® WASTEWATER TREATMENT SYSTEM MODEL TNT - 1000 GPD	APPROVED BY: JMM	DATE: 2-16-06
© MMVII		SCALE: NTS	PC-5-7067